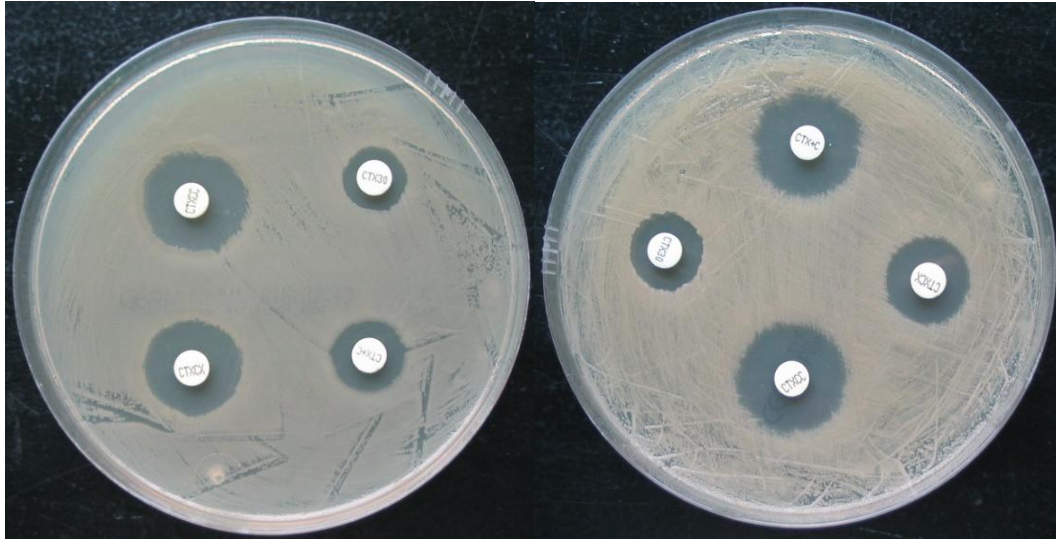


# ESBL + AmpC Screen ID kit

For screening of ESBL + AmpC



*E.coli* ATCC FN9414 AmpC positive

*Klebsiella pneumoniae* ATCC 700603 ESBL positive

- ✓ **Simple to test**
- ✓ **Easy to interpret**
- ✓ **Long shelflife**
- ✓ **After opening, room temperature storage ( $\leq 25^{\circ}\text{C}$ )**
- ✓ **High sensitivity and specificity**

Current susceptibility tests are not accurate enough for surveillance of ESBL and AmpC producing pathogens. Laboratories testing ESBL and AmpC, need to be aware, that some of these organisms may test false positive for ESBL, using CLSI methodology (40).

# ESBL + AmpC Screen ID kit

- Combined disk test (ESBL+AmpC)**

Apply one tablet of:

**A = Cefotaxime (CEFOTAXIME)**

**B = Cefotaxime+Clavulanate (CEFOTAXIME+CLAVULANATE)**

**C = Cefotaxime+Cloxacillin (CEFOTAXIME+CLOXACILLIN)**

**D = Cefotaxime+Clavulanate+Cloxacillin (CEFOTAXIME+CLAVULANATE+CLOXACILLIN)**

on an inoculated Mueller Hinton agar plate (McFarland 0.5).

- Interpretation (combined test)**

		<b>CEFOTAXIME</b>	<b>CEFOTAXIME+ CLAVULANATE</b>	<b>CEFOTAXIME+ CLOXACILLIN</b>
<b>ESBL</b>	<b>CEFOTAXIME+ CLAVULANATE or</b>	≥ 5 mm	-	-
	<b>CEFOTAXIME+ CLAVULANATE+ CLOXACILLIN</b>	-	< 5 mm	≥ 5 mm
<b>AmpC</b>	<b>CEFOTAXIME+ CLOXACILLIN or</b>	≥ 5 mm	-	-
	<b>CEFOTAXIME+ CLAVULANATE+ CLOXACILLIN</b>	-	≥ 5 mm	< 5 mm
<b>ESBL+AmpC</b>	<b>CEFOTAXIME+ CLAVULANATE and</b>	<5 mm	-	-
	<b>CEFOTAXIME+ CLAVULANATE+ CLOXACILLIN</b>	-	≥ 5 mm (AmpC)	≥ 5 mm (ESBL)

Neither ESBL nor AmpC: All zones within 2 mm of each other.

In strains possessing both chromosomal (Enterobacter, Cit. freundii etc. (44) or plasmidic AmpC beta lactamases and ESBLs) Boronic acid or Cloxacillin, are used as inhibitors of the AmpC beta lactamase.

For detailed information about the test, please also look in:

- our Neo-Sensitabs™ Users Guide - document **1.1.0, page 5**
- Detection of resistance mechanisms using Neo-Sensitabs™ and Diatabs™
- ESBL+AmpC Screen kit and ESBL Confirm ID Kit.

**One kit containing (50 tests):**

- 1 cartridge of Cefotaxime
- 1 cartridge of Cefotaxime+Clavulanate
- 1 cartridge of Cefotaxime+Cloxacillin
- 1 cartridge of Cefotaxime+Clavulanate+Cloxacillin